

Preventing Pet Emergencies

What Can Pet Owners Do ?

Dr. Julie Damron, DVM
Medical Director



Prevention

An ounce of prevention is worth a pound of cure
Benjamin Franklin

Routine Medical Examinations

- Identify disease at the earliest point
- Guidance on best medical practices
- Annually <5-7 years
- Bi-annually >5-7 years
- Preventative Labwork



Vaccinations-Core and non-core

- Dogs
 - Dapp
 - Rabies
 - Lyme
 - Lepto
 - Bordetella/Flu
- Cats
 - RCP
 - Rabies
 - Leukemia



Preventative Heartworm/Flea/Tick

- Heartworm-annual blood test, monthly preventative
 - Comes from Mosquitoes
 - No Treatment in Cats
 - Treatment for Dogs is Expensive and uses Arsenic
- NexGard & Bravecto-Dogs
- Fleas and Ticks are both Carriers of Disease
- Advantage Multi-Cats

Microchip-Avid, Home Again

- Permanent Identification of your pet
- You never know when an emergency can happen
- Saves Lives
- Required for both dogs and cats in the City of Stockton
- Use a collar as well
- Make sure information is always current
- Have photos of your pets

Exercise

- Benefits Both of You
- Healthy Weight
- Good for the Mind and Body



What is an emergency ?

An emergency is any event that directly or indirectly compromises the life of a patient

What you do in the first few minutes to hours can determine if your pet recovers or dies



Most Common Causes for ER Visits

Hit By Car

Fighting

Toxins

Garbage or People Food Ingestion

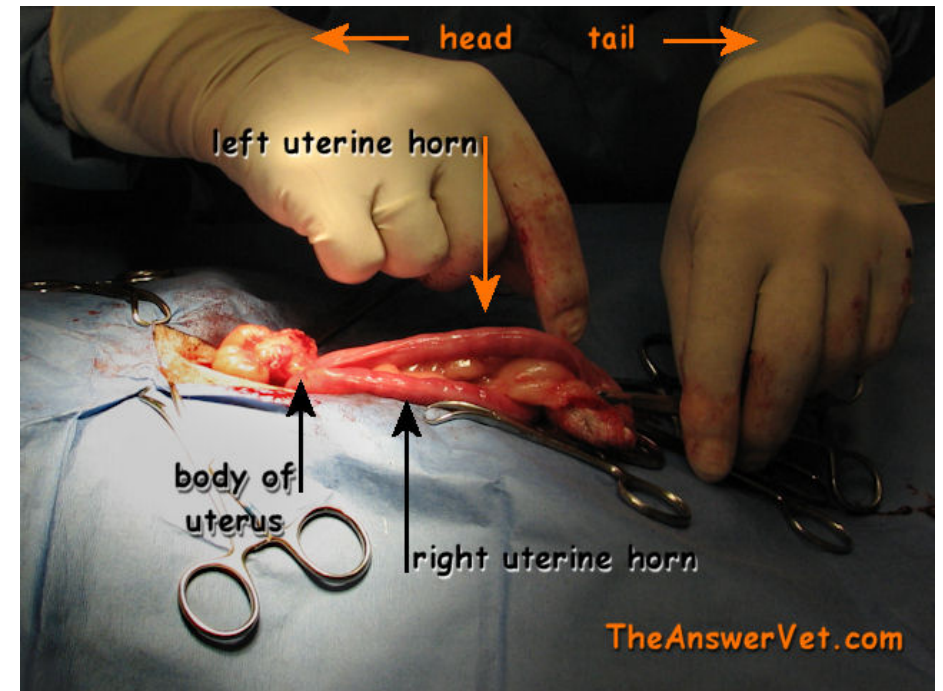
Birthing Complications

Insect Bites

Euthanasia's

Spay and Neuter

- Helps pets live longer
- Prevents Cancer
- Prevents Birthing Complications
- Reduces Fighting
- Less Likely to Roam



Try to Keep Pets Indoors

- More interaction
 - Benefits You and Them
- Better Shelter
 - Less Exposure to Temperature Extremes
 - Protected From the Elements
- More Controlled Environment
 - Less likely to fight, be HBC, exposed to toxins
- Live Longer

Trauma

Hit by a car
Animal Fight
Fall



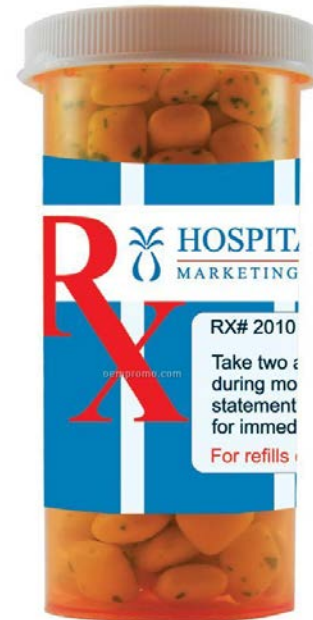
Even though your pet may appear ok, there can be hidden underlying trauma that doesn't manifest for hours to days.

Keep Medications and Toxins out of Reach

Many Human Medications are Toxic to Animals

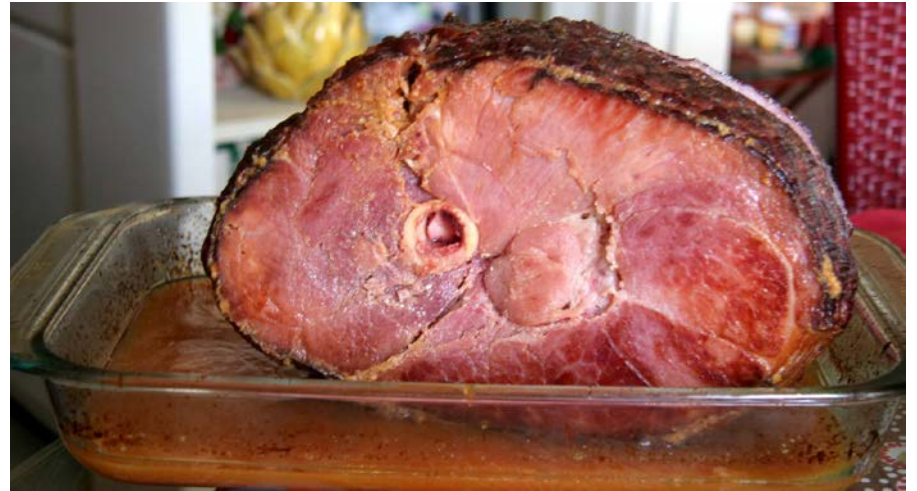
- Pain medications
- Heart Medications
- Muscle Relaxants
- Steroids

Marijuana



Do Not Feed People Food

- Not Nutritionally Beneficial
- Can Gain Weight
- Promotes Dental Disease
- Can Develop GI Upset/Pancreatitis
- Can Make Pets not want to eat Pet Food
- Common at Thanksgiving, Christmas, July 4th, Easter



Do Not Feed Bones/Keep Food and Garbage Secure

- Bones can cause many problems
 - Fractured teeth
 - Obstruction
 - Gastrointestinal tear
- Garbage ingestion cause many issues
 - GI Upset/HGE
 - Obstruction
- Gum/Candy-Xylitol
 - Hypoglycemia
 - Liver Disease



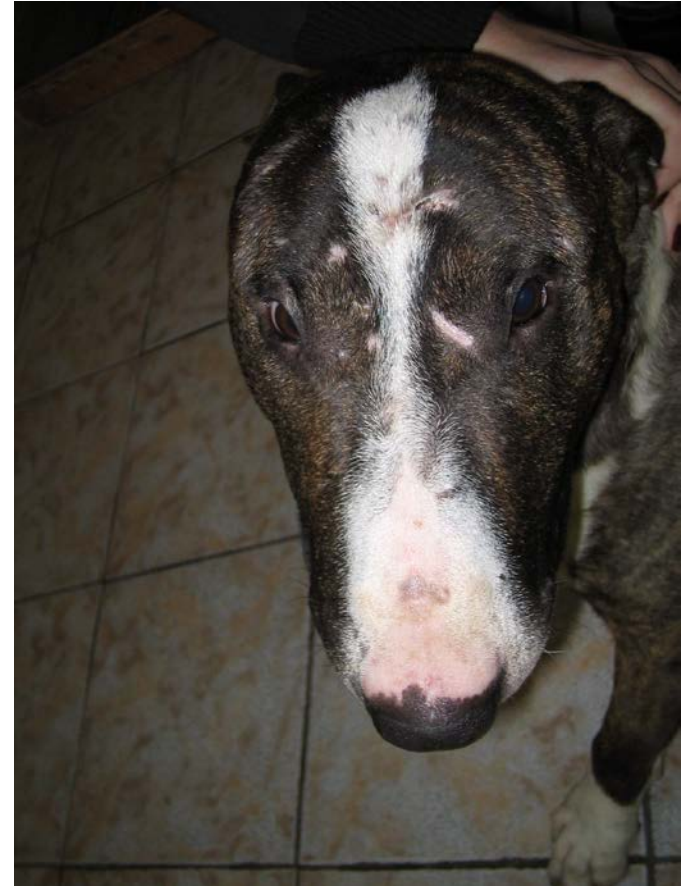
Trauma Treatment

Supportive care: Oxygen, Intravenous Fluids

Diagnostics: X-rays, Lab work

Medications: Pain, Antibiotics

Surgery/Wound Care



Bleeding

Toxin

Tumor

Coagulation Issue

Bone Marrow Problem



Some bleeding problems occur very rapidly and are very life threatening.

Others occur slowly and patients adapt to them.

Bleeding Treatment

Stop the bleeding-Pressure Wrap, Chinese Herb

Find the underlying cause-Xrays, Surgery

Blood Transfusion

Medications



Respiratory or Swallowing abnormalities

Symptoms: panting, open mouth breathing, Head and neck extension, coughing, sudden collapse



Respiratory Support

Oxygen

Intubation

Sedation/Pain medication

Medications

Chest tap

X-rays

Surgery



Poison Consumption



Poison can result in death

Some toxins can take hours to weeks to cause problems

Common Toxins: Rodenticides, Snail bait, Antifreeze, Human Medications, Xylitol, Plants, Foodstuffs

Always call poison control or the emergency clinic right away with any concerns.

ASPCA Poison Control (888) 426-4435

ASPCA Free Phone Application

WWW.ASPCA.ORG

Poison Treatment

Induce Vomiting

Conscious Patient,
Not Caustic Product

Activated Charcoal

Intravenous Fluids

Gastric Lavage

Medications

Seizure

Muscle Tremors

Anxiety

Heart Rhythm, Blood Pressure



Stockton Veterinary Emergency and Specialty Clinic

1661 W. Fremont St,
(209) 467-8727



Monday-Friday 6pm-8 am

Saturday, Sunday, & Holidays 24 hours